

# Equipment Specification

## FootfallCam 3D MAX™ FC-F3DM01

FootfallCam 3D MAX™ is suitable for the ceiling height (2.5m-4.5m) and is embedded with a powerful 1.2GHz Quadcore processor, specifically to run its complex video processing algorithm. Our processor has 20x higher processing power than our previous version powered by the latest algorithm which uses both colour and texture pattern to identify a person, producing far superior accuracy than using colour pattern alone.



### Key Features

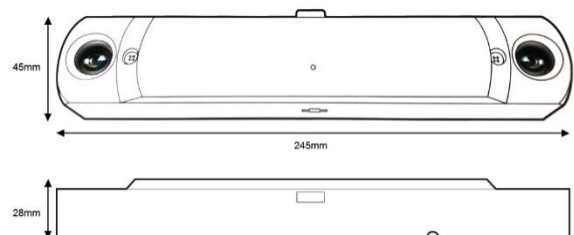
- Stereo Vision Technology
- Real-time Occupancy Counting
- Longest lifespan – MBTF25 years
- Widest Door Coverage
- Bi-directional Counting
- Most Accurate Counting with Video Proof
- Superior Processing Power – Accurate 3D Counting in adverse environment
- Easy to Install and Set Up
- 1-year Manufacture Warranty

### Basic Functions

- 1. Video Counting**  
Counting ins and outs (measure store performance, data collection for analysis of store performance, measure marketing response).
- 2. Wi-Fi Counting**  
Basic Wi-Fi counting metrics are available e.g. outside traffic, visit duration, returning rate and traffic flow profiling.
- 3. Staff Exclusion**  
Staffs are excluded from counting just by clipping the Staff Exclusion Tag on the shirt with no infrared or any emission involved.

### Advanced Functions

- 1. Wi-Fi Hotspot**  
Able to function as an internet router that provides smooth high-speed internet for connecting as free wi-fi hotspot.
- 2. PA System Functionality**  
Compatible with all standard powered speakers, broadcasts promotional messages on the product when customer interacts with the shelf display.
- 3. In-Store Analytics/ Large Area Tracking**  
Views of multiple counters can be combined and stitched to continuously track each visitor's entire journey through the store.
- 4. In-Store Kiosk Integration**  
Integrates with Magic Mirror to perform interactive advertisement, brand promotion, virtual makeup/dressing and loyalty card kiosk.
- 5. Real-time Occupancy Tracking**  
Track the number of visitors in a building at any given time along with smart display with live occupancy update. Alert staff when occupancy limit is breached.
- 6. GPIO Functionality**  
Integrate occupancy counting with all entrances and exits. If the occupancy level is reached, it will automatically close the door to prevent more customers from coming in.



Key Specifications	
Device Dimension	Device dimensions (WxDxH): 246mm x 46mm x 28mm Packing dimensions (WxDxH):255mm x 210mm x 55mm
Weight	Device weight: 0.6 kg; Package weight: 1.02kg
Cameras	2x 5MP resolutions Lens: 160° - Versatile ceiling height suitability for most installation environment
Mounting Height	2.5 meters- 4.5 meters
RAM	1 GB
Casing	Aluminum oxide alloy, Water and dust resistant
Field Upgradable	Manual/ Auto Software upgrade
Power	Power over Ethernet: 47V DC, 0.12A (6W)
Illumination	Minimum 1 lux
LEDs	LEDs troubleshooting for counting issues
Environmental Specs	Operating environment: Temperature 10°C to 45°C, Humidity 10% - 90% Storage environment: Temperature -40°C to 80°C, Humidity 10% - 95%
Thermal Conductivity	235W/mK
Output	5MP Omni vision 5647 Camera Module
Frame Rate	25 fps - Live Stream of counting will only display 320x420 resolution to reduce bandwidth sent to database for verification purpose, CCTV function displays1080p resolution
Storage	8 GB memory (Built-in) - External Micro SD slot (support up to 128 GB)
Cabling	Cat5e, Cat6
Tracking Technology	3D- Spacing Mapping Video tracking technology, Background removal on static objects
IP Rating	IP 31
Origin	Made in the UK

Power Unit Specifications	
Power Over Ethernet (PoE)	Yes (IEEE802.3at)
PoE Mode	Mode B
Consumption	5w
AC input	110V – 240V, 50/60Hz

Firmware Specifications (on counter level)	
Interface	Http; Https
User Levels	2 levels: Administrator, Standard User
Operating System	Footfall Counter OS
Ethernet	10/100 Mb Ethernet
Data Delivery	TCP/IP
Database Type	SQLite
Report format	csv, .xml, .txt
Data Storage on counter level	Hourly Data: 300 days Raw Data : 7 days Wi-Fi Data : 3 days <i>*Data which has sent to server will keep permanently in server level</i>
Data Backup	Yes
Firmware Feature	Dual Operating System, Hardware watchdog, Multicore processor
Data Upload to Server	Every Hour

\*Server level specification please refer to [software datasheet](#)

## COVERAGE TABLE

Ceiling Height (m)	Coverage Area (m) (Horizontal FOV x Vertical FOV)	Lens type
2.5	2.33 x 1.72 m	160
2.6	2.55 x 1.91 m	160
2.7	2.85 x 2.10 m	160
2.8	3.10 x 2.30 m	160
2.9	3.36 x 2.51 m	160
3.0	3.61 x 2.70 m	160
3.1	3.88 x 2.89 m	160
3.2	4.14 x 3.09 m	160
3.3	4.40 x 3.28 m	160
3.4	4.66 x 3.47 m	160
3.5	4.92 x 3.66 m	160
3.6	5.17 x 3.86 m	160
3.7	5.43 x 4.05 m	160
3.8	5.69 x 4.24 m	160
3.9	5.95 x 4.44 m	160
4.0	6.21 x 4.63 m	160
4.1	6.21 x 4.63 m	160
4.2	6.21 x 4.63 m	160
4.3	6.21 x 4.63 m	160
4.4	6.21 x 4.63 m	160
4.5	6.21 x 4.63 m	160

**Notes:**

- 1) For mounting height >4.50m, please contact [sales@footfallcam.com](mailto:sales@footfallcam.com) for another model recommendation of FootfallCam.
- 2) For mounting height >8.00m, recommend to use drop pole when installing the counter to the acceptable range.

## FootfallCam 3D MAX 2™<sub>FC-F3DM02</sub>



FootfallCam 3D MAX 2™ is suitable for the ceiling height (2.5m-4.5m) and is embedded with a powerful 1.2GHz Quadcore processor, specifically to run its complex video processing algorithm. Our processor has 20x higher processing power than our previous version powered by the latest algorithm which uses both colour and texture pattern to identify a person, producing far superior accuracy than using colour pattern alone.

### Key Features

- Stereo Vision Technology
- Real-time Occupancy Counting
- Longest lifespan – MBTF25 years
- Widest Door Coverage
- Bi-directional Counting
- Most Accurate Counting with Video Proof
- Superior Processing Power – Accurate 3D Counting in adverse environment
- Easy to Install and Set Up
- 1-year Manufacture Warranty

### Basic Functions

#### 1. Video Counting

Counting ins and outs (measure store performance, data collection for analysis of store performance, measure marketing response).

#### 2. Wi-Fi Counting

Basic Wi-Fi counting metrics are available e.g. outside traffic, visit duration, returning rate and traffic flow profiling.

#### 3. Staff Exclusion

Staffs are excluded from counting just by clipping the Staff Exclusion Tag on the shirt with no infrared or any emission involved.

### Advanced Functions

#### 1. Wi-Fi Hotspot

Able to function as an internet router that provides smooth high-speed internet for connecting as free wi-fi hotspot.

#### 2. PA system functionality

Compatible with all standard powered speakers, broadcasts promotional messages on the product when customer interacts with the shelf display.

#### 3. In-Store Analytics/ Large Area Tracking

Views of multiple counters can be combined and stitched to continuously track each visitor's entire journey through the store.

#### 4. In-Store Kiosk Integration

Integrates with Magic Mirror to perform interactive advertisement, brand promotion, virtual makeup/dressing and loyalty card kiosk.

#### 5. Real-time Occupancy Tracking

Track the number of visitors in a building at any given time along with smart Display with live occupancy update. Alert staff when occupancy limit is breached.

#### 6. GPIO Functionality

Integrate occupancy counting with all entrances and exits. If the occupancy level is reached, it will automatically close the door to prevent more customers from coming in.

#### 7. 360° CCTV Recording

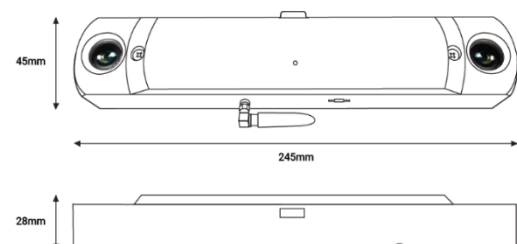
Records the store with 360° angle to minimise the number of CCTV required. High Definition recording at 1080p to ensure playbacks are clear.

#### 8. ESL functionality

Integrates with FootfallCam's Electronic Shelf Label (ESL) to update all product prices simultaneously with no labor cost.

#### 9. EAS functionality

Integrates with FootfallCam's EAS system to perform facial recognition analytics and improve customer experience for anti-theft.



Key Specifications	
Device Dimension	Device dimensions (WxDxH): 246mm x 46mm x 28mm Packing dimensions (WxDxH):255mm x 210mm x 55mm
Weight	Device weight: 0.6 kg; Package weight: 1.02kg
Cameras	2x 5MP resolutions Lens: 160° - Versatile ceiling height suitability for most installation environment
Mounting Height	2.5 metres- 4.5metres
RAM	1 GB
Casing	Aluminum oxide alloy, Water and dust resistant
Field Upgradable	Manual/ Auto Software upgrade
Power	Power over Ethernet: 47V DC, 0.12A (6W)
Illumination	Minimum 1 lux
LEDs	LEDs troubleshooting for counting issues
Environmental Specs	Operating environment: Temperature 10°C to 45°C, Humidity 10% - 90% Storage environment: Temperature -40°C to 80°C, Humidity 10% - 95%
Thermal Conductivity	235W/mK
Output	5MP Omni vision 5647 Camera Module
Frame Rate	25 fps - Live Stream of counting will only display 320x420 resolution to reduce bandwidth sent to database for verification purpose, CCTV function displays 1080p resolution
Antenna Coverage	100 ft radius
Storage	8 GB memory (Built-in) + 64 GB memory (Micro SD) - External Micro SD slot (Support up to 128 GB)
Cabling	Cat5e, Cat6
Tracking Technology	3D- Spacing Mapping Video tracking technology, Background removal on static objects
IP Rating	IP 31
Origin	Made in the UK

Power Unit Specifications	
Power Over Ethernet (PoE)	Yes (IEEE802.3at)
PoE Mode	Mode B
Consumption	5w
AC input	110V – 240V, 50/60Hz

Firmware Specifications (on counter level)	
Interface	Http; Https
User Levels	2 levels: Administrator, Standard User
Operating System	Footfall Counter OS
Ethernet	10/100 Mb Ethernet
Data Delivery	TCP/IP
Database Type	SQLite
Report format	csv, .xml, .txt
Data Storage on counter level	Hourly Data: 300 days Raw Data : 7 days Wi-Fi Data : 3 days <i>*Data which has sent to server will keep permanently in server level</i>
Data Backup	Yes
Firmware Feature	Dual Operating System, Hardware watchdog, Multicore processor
Data Upload to Server	Every Hour

\*Server level specification please refer to [software datasheet](#)

Ceiling Height (m)	Coverage Area (m) (Horizontal FOV x Vertical FOV)	Lens type
2.5	2.33 x 1.72 m	160
2.6	2.55 x 1.91 m	160
2.7	2.85 x 2.10 m	160
2.8	3.10 x 2.30 m	160
2.9	3.36 x 2.51 m	160
3.0	3.61 x 2.70 m	160
3.1	3.88 x 2.89 m	160
3.2	4.14 x 3.09 m	160
3.3	4.40 x 3.28 m	160
3.4	4.66 x 3.47 m	160
3.5	4.92 x 3.66 m	160
3.6	5.17 x 3.86 m	160
3.7	5.43 x 4.05 m	160
3.8	5.69 x 4.24 m	160
3.9	5.95 x 4.44 m	160
4.0	6.21 x 4.63 m	160
4.1	6.21 x 4.63 m	160
4.2	6.21 x 4.63 m	160
4.3	6.21 x 4.63 m	160
4.4	6.21 x 4.63 m	160
4.5	6.21 x 4.63 m	160

**Notes:**

- 1) For mounting height >4.50m, please contact [sales@footfallcam.com](mailto:sales@footfallcam.com) for another model recommendation of FootfallCam.
- 2) For mounting height >8.00m, recommend to use drop pole when installing the counter to the acceptable range.



## FootfallCam 3D Plus™ FC-F3DP01

FootfallCam 3D Plus™ is embedded with a powerful 1GHz processor, specifically to run its complex video processing algorithm. Our GPU Processor is powered by the latest algorithm which uses both colour and texture pattern to identify the person, producing far superior accuracy than when using colour pattern alone.

### Key Features

- Stereo Vision Technology
- Bi-directional counting
- Accurate Counting with Video Proof
- Easy to Install and Set Up

Power Unit Specifications	
Power Over Ethernet (PoE)	Yes (IEEE802.3at)
PoE Mode	Mode B
Consumption	5w
AC input	110V – 240V, 50/60Hz

Software Specifications	
User Levels	2 levels: Administrator, Standard User
Operating System	Footfall Counter OS
Ethernet	10/100 Mb Ethernet
Data Delivery	TCP/IP
Database Type	SQLite
Report format	csv, .xml, .txt
Data Storage	50 Years storage with auto sync
Data Backup	Yes

### Functions

#### 1. Visitor Count

Count Ins and outs. Measure store performance, determine underlying cause for poor store performance (low footfall or ineffective sales strategy) and measure marketing response.

#### 2. Wi-Fi Tracking

Identify customers based on the unique MAC address of individual mobile phones and derive additional data metrics such as visit duration, determining returning customers and profiling traffic flow for a large area.

#### 3. Heat Map Tracking

In store analytics to determine number of people engaged in a specific area of interest

#### 4. Queue Counting

Intelligently track the queue line, determine the average wait time of customers and send an alert when the number of people waiting in the line exceeds the threshold

#### 5. Wi-Fi Hotspot

Able to work as an internet router that provide smooth high-speed internet for connecting as free wi-fi hotspot. Retailer can customise their own user interface to match with the brand image and ability to harvest user data for those have connected.

#### 6. Staff Exclusion

Able to exclude staff counting with 3 different methods:

- I. Wearing a staff exclusion tag
- II. Pressing a wired button installed next to the entrance
- III. Pressing a hand carried remote button by staff

Key Specifications	
Device Dimension	Device dimensions (WxDxH): 246mm x 46mm x 28mm Packing dimensions (WxDxH): 255mm x 210mm x 55mm
Weight	Device weight: 0.6 kg; Package weight: 1.02kg
Cameras	2x 5MP resolutions Lens: Parabolic 140°, 100° and 65° - Versatile ceiling height range. Accommodate most installation environment
Ideal Mounting Height	2.2 metres- 7.0 metres
Casing	Aluminium oxide alloy, Water and dust resistant
Field Upgradable	Auto Software upgrade
Power	Power over Ethernet: 47V DC, 0.12A (6W)
Illumination	Minimum 1 lux
LEDs	LEDs troubleshooting for counting issues
Environmental Specs	Operating environment: Temperature 10°C to 45°C, Humidity 10% - 90% Storage environment: Temperature -40°C to 80°C, Humidity 10% - 95%
Thermal Conductivity	235W/mK
Output	5MP Omni vision 5647 Camera Module
Frame Rate	15 fps - Live Stream will only display 320x420 resolution to reduce bandwidth sent to database for verification purpose
Storage	Micro SD, 8 GB memory
Cabling	Cat5, Cat6
Tracking Technology	3D- Spacing Mapping Video tracking technology, Background removal on static objects
Firmware Feature	Dual Operating System, Hardware watchdog, Multicore processor
IP Rating	IP 31
Origin	Made in the UK



Model	FootfallCam 3D Plus-LC™	FootfallCam 3D Plus-NC™	FootfallCam 3D Plus-HC™
Lens	Parabolic 140°	100°	65°
Ideal Mounting Height	2.2 metres – 2.5 metres	2.5 metres – 4.5 metres	4.5 metres – 7.0 metres
Coverage Area (m) (Horizontal FOV x Vertical FOV)			
2.2	1.66 x 1.49 m		
2.3	1.84 x 1.65 m		
2.4	2.29 x 1.82 m		
2.5	2.45 x 1.83 m	2.45 x 1.83 m	
2.6		2.69 x 2.01 m	
2.7		2.94 x 2.19 m	
2.8		3.18 x 2.37 m	
2.9		3.43 x 2.56 m	
3.0		3.67 x 2.74 m	
3.1		3.92 x 2.92 m	
3.2		4.16 x 3.10 m	
3.3		4.16 x 3.10 m	
3.4		4.16 x 3.10 m	
3.5		4.16 x 3.10 m	
3.6		4.16 x 3.10 m	
3.7		4.16 x 3.10 m	
3.8		4.16 x 3.10 m	
3.9		4.16 x 3.10 m	
4.0		4.16 x 3.10 m	
4.1		4.16 x 3.10 m	
4.2		4.16 x 3.10 m	
4.3		4.16 x 3.10 m	
4.4		4.16 x 3.10 m	
4.5		4.16 x 3.10 m	4.16 x 3.10 m
4.6			4.16 x 3.10 m
4.7			4.16 x 3.10 m
4.8			4.16 x 3.10 m
4.9			4.16 x 3.10 m
5.0			4.16 x 3.10 m
5.1			4.16 x 3.10 m
5.2			4.16 x 3.10 m
5.3			4.16 x 3.10 m
5.4			4.16 x 3.10 m
5.5			4.16 x 3.10 m
5.6			4.16 x 3.10 m
5.7			4.16 x 3.10 m
5.8			4.16 x 3.10 m
5.9			4.16 x 3.10 m
6.0			4.16 x 3.10 m
6.1			4.16 x 3.10 m
6.2			4.16 x 3.10 m
6.3			4.16 x 3.10 m
6.4			4.16 x 3.10 m
6.5			4.16 x 3.10 m
6.6			4.16 x 3.10 m
6.7			4.16 x 3.10 m
6.8			4.16 x 3.10 m
6.9			4.16 x 3.10 m
7.0			4.16 x 3.10 m

**Notes:**

- 1.) For ceiling height 3.20 -4.50 metres, 100-degree lens is recommended with the digital zoom function to the level of 3.20 metres field of view
- 2.) For ceiling height 4.50 - 7.00 metres, 65-degree lens is recommended with the digital zoom function to the level of 4.50 metres field of view



## FootfallCam 3D Plus2™ FC-F3DP04

FootfallCam 3D Plus™ is embedded with a powerful 1.2 GHz processor, specifically to run its complex video processing algorithm. Our GPU Processor is powered by the latest algorithm which uses both colour and texture pattern to identify the person, producing far superior accuracy than when using colour pattern alone.

### Key Features

- Count Real-time Occupancy
- Smart Display with Live Occupancy Update
- Alert Staff if Capacity Limit is Breached
- Stereo Vision Technology
- Bi-directional counting
- Accurate Counting with Video Proof
- Easy to Install and Set-Up

Power Unit Specifications	
Power Over Ethernet (PoE)	Yes (IEEE802.3at)
PoE Mode	Mode B
Consumption	5w
AC input	110V – 240V, 50/60Hz

Software Specifications	
User Levels	2 levels: Administrator, Standard User
Operating System	FootfallCam OS
Ethernet	10/100 Mb Ethernet
Data Delivery	TCP/IP
Database Type	SQLite
Report format	csv, .xml, .txt
Data Storage	50 Years storage with auto-sync
Data Backup	Yes

### Functions

#### 1. Real-time Occupancy Tracking

Track the number of visitors in a building at any given time.

#### 2. Smart Display with Live Occupancy Update

Simple traffic light system to tell customers whether they should come in, or whether the maximum occupancy has been reached and they should wait.

#### 3. Staff Alert if Capacity Limit is Breached

If the capacity limit is breached, an alert will be sent to the management to take action.

#### 4. Visitor Count

Counting Ins and outs, (measure store performance, find out if bad performing stores were due to low footfall or bad sales effort, measure marketing response.)

#### 5. Wi-Fi Tracking

By collecting the unique MAC ID of each phone with their signal strength and timestamp, derived more data metrics like outside traffics, visit duration, returning customer and traffic flow profiling for a large area.

#### 6. Heat Map Tracking

In-store analytics to determine the number of people engaged in a specific area of interest

#### 7. Queue Counting

Intelligently track the queue line and determine the average wait time of customers and send an alert when the number of people waiting in the line exceeds the threshold

#### 8. Staff Exclusion

Able to discount staffs with 3 different methods:

- I. Wearing a staff exclusion tag
- II. Pressing a wired button fixed next to the entrance
- III. Pressing a remote button that is carried by staff

Key Specifications	
Device Dimension	Device dimensions (WxDxH): 246mm x 46mm x 28mm Packing dimensions (WxDxH):255mm x 210mm x 55mm
Weight	Device weight: 0.6 kg; Package weight: 1.02kg
Cameras	2x 5MP resolutions Lens: Parabolic 140°, 100° and 65° - Versatile ceiling height range. Accommodate most installation environment
Ideal Mounting Height	2.2 metres- 7.0 metres
Casing	Aluminium oxide alloy, Water and dust resistant
Field Upgradable	Auto Software upgrade
Power	Power over Ethernet: 47V DC, 0.12A (6W)
Illumination	Minimum 1 lux
LEDs	LEDs troubleshooting for counting issues
Environmental Specs	Operating environment: Temperature 10°C to 45°C, Humidity 10% - 90% Storage environment: Temperature -40°C to 80°C, Humidity 10% - 95%
Thermal Conductivity	235W/mK
Output	5MP Omni vision 5647 Camera Module
Frame Rate	20 fps - Live Stream will only display 320x420 resolution to reduce bandwidth sent to the database for verification purpose
Processor	1GB, 1.2 GHz
Storage	Micro SD, 8 GB memory
Cabling	Cat5, Cat6
Tracking Technology	3D- Spacing Mapping Video tracking technology, Background removal on static objects
Firmware Feature	Dual Operating System, Hardware watchdog, Multicore processor
IP Rating	IP 31
Origin	Made in the UK



Model	FootfallCam 3D Plus2-LC™	FootfallCam 3D Plus2-NC™	FootfallCam 3D Plus2-HC™
Lens	Parabolic 140°	100°	65°
Ideal Mounting Height	2.2 metres – 2.5 metres	2.5 metres – 4.5 metres	4.5 metres – 7.0 metres
Coverage Area (m) (Horizontal FOV x Vertical FOV)			
2.2	1.66 x 1.49 m		
2.3	1.84 x 1.65 m		
2.4	2.29 x 1.82 m		
2.5	2.45 x 1.83 m	2.45 x 1.83 m	
2.6		2.69 x 2.01 m	
2.7		2.94 x 2.19 m	
2.8		3.18 x 2.37 m	
2.9		3.43 x 2.56 m	
3.0		3.67 x 2.74 m	
3.1		3.92 x 2.92 m	
3.2		4.16 x 3.10 m	
3.3		4.41 x 3.29 m	
3.4		4.65 x 3.47 m	
3.5		4.90 x 3.65 m	
3.6		5.14 x 3.83 m	
3.7		5.39 x 4.02 m	
3.8		5.63 x 4.20 m	
3.9		5.88 x 4.38 m	
4.0		6.12 x 4.56 m	
4.1		6.12 x 4.56 m	
4.2		6.12 x 4.56 m	
4.3		6.12 x 4.56 m	
4.4		6.12 x 4.56 m	
4.5		6.12 x 4.56 m	4.70 x 3.51 m
4.6			4.85 x 3.61 m
4.7			5.00 x 3.72 m
4.8			5.14 x 3.83 m
4.9			5.29 x 3.94 m
5.0			5.40 x 4.05 m
5.1			5.52 x 4.14 m
5.2			5.67 x 4.26 m
5.3			5.81 x 4.38 m
5.4			5.96 x 4.50 m
5.5			6.10 x 4.62 m
5.6			6.25 x 4.74 m
5.7			6.39 x 4.96 m
5.8			6.54 x 5.08 m
5.9			6.68 x 5.20 m
6.0			6.83 x 5.32 m
6.1			6.83 x 5.32 m
6.2			6.83 x 5.32 m
6.3			6.83 x 5.32 m
6.4			6.83 x 5.32 m
6.5			6.83 x 5.32 m
6.6			6.83 x 5.32 m
6.7			6.83 x 5.32 m
6.8			6.83 x 5.32 m
6.9			6.83 x 5.32 m
7.0			6.83 x 5.32 m

**Notes:**

- 1.) For ceiling height 4.00 -4.50 metres, 100-degree lens is recommended with the digital zoom function to the level of 4.00 metres field of view
- 2.) For ceiling height 6.00 - 7.00 metres, 65-degree lens is recommended with the digital zoom function to the level of 6.00 metres field of view

## FootfallCam 3D Plus™ AP FC-F3DP01

FootfallCam 3D Plus™ use the same chipset and component and is embedded with a powerful 1GHz processor, specifically to run its complex video processing algorithm. Our GPU Processor is powered by the latest algorithm which uses both colour and texture pattern to identify the person, producing far superior accuracy than when using colour pattern alone. FootfallCam is equipped with lenses which provide super wide-angle view in ensuring good depth of view as compared to telephoto lenses.



### Key features

- Stereovision technology
- Widest field coverage
- Bi-directional counting
- Accurate counting with video proof
- Easy to install and setup

Power Unit Specifications	
Power Over Ethernet (PoE)	Yes (IEEE802.3at)
PoE Mode	Mode B
Consumption	5w
AC input	110V – 240V, 50/60Hz

Software Specifications	
Interface	Http; Https
User Levels	2 levels: Administrator, Standard User
Operating System	Footfall Counter OS
Ethernet	10/100 Mb Ethernet
Data Delivery	TCP/IP
Database Type	SQLite
Report format	csv, .xml, .txt
Data Storage	50 Years storage with auto sync
Data Backup	Yes

For more information on Software Specifications, please refer to [FootfallCam Analytic Manager Datasheet](#)

### Counter diagnosis

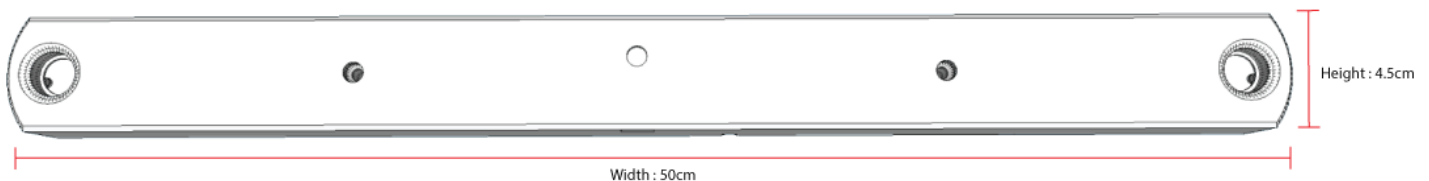
Our counter is equipped with the simple RGB LED light which change colour based on the status of the power, system and the network stability. This enables the simple diagnose of the hardware issues which can efficiently lower the support cost required.

LED Colour	Diagnosis
● Blue Light	Everything is working
○ No Light	Power Issue
● Yellow Light	Cable Issue
● Green Light	Network Issue
● Red Light	System Issue

### Specifically designed for Airports

1. **Visitor count**  
Counting Ins and outs, (measure store performance, find out if bad performing stores were due to low footfall or bad sales effort, measure marketing response.)
2. **Dynamic queue counting**  
Track the queue line and determine the average wait time of customers, and send an alert to management when the number of people waiting exceeds the threshold
3. **Passenger queue playback**  
Tracked data are stored in the database, and the queue counting view can be replayed later for in-depth analysis of critical passenger flow situations.
4. **Area profiling**  
Enlarged overview of the airport premise to determine which area is crowded and which area is underutilised

Key Specifications	
Device Dimension	Device dimensions (WxDxH): 246mm x 46mm x 28mm
Weight	Device weight: 0.6 kg; Package weight: 1.02kg
Cameras	2x 5MP resolutions Lens: 100° - Versatile ceiling height range. Accommodate most installation environment
Ideal Mounting Height	5 metres - 25 metres (Based on product variations)
RAM	1 GB
Casing	Aluminum oxide alloy, Water and dust resistant
Field Upgradable	Auto Software upgrade
Power	Power over Ethernet: 47V DC, 0.12A (6W)
Illumination	Minimum 300 lux
LEDs	LEDs troubleshooting for counting issues
Environmental Specs	Operating environment: Temperature 10°C to 45°C, Humidity 10% - 90% Storage environment: Temperature -40°C to 80°C, Humidity 10% - 95%
Thermal Conductivity	235W/mK
Output	5MP Omni vision 5647 Camera Module
Frame Rate	15 fps - Live Stream will only display 320x420 resolution to reduce bandwidth sent to database for verification purpose
Storage	Micro SD, 8 GB memory
Cabling	Cat5, Cat6
Tracking Technology	3D- Spacing Mapping Video tracking technology, Background removal on static objects
Firmware Feature	Dual Operating System, Hardware watchdog, Multicore processor
IP Rating	IP 31
Origin	Made in the UK



Coverage table of FootfallCam

Model	FootfallCam 3D Plus™	FootfallCam 3D Plus AP-HC™
Lens	100°	Angled 65°
Ideal Mounting Height	2.1 metres – 9.0 metres	9.0 metres – 25.00 metres
Coverage Area (m) (Horizontal FOV x Vertical FOV)		
2.5	2.50 x 2.25 m	
3.0	3.80 x 3.00 m	
3.5	5.00 x 4.00 m	
4.0	6.20 x 5.00 m	
4.5	7.33 x 6.00 m	
5.0	8.50 x 7.00 m	
5.5	9.70 x 8.00 m	
6.0	11.00 x 10.00 m	
6.5	12.00 x 11.00 m	
7.0	12.00 x 11.00 m	
7.5	12.00 x 11.00 m	
8.0	12.00 x 11.00 m	
8.5	12.00 x 11.00 m	
9.0	12.00 x 11.00 m	
9.5		12.00 x 11.00 m
10.0		12.00 x 11.00 m
10.5		12.00 x 11.00 m
11.0		12.00 x 11.00 m
11.5		12.00 x 11.00 m
12.0		12.00 x 11.00 m
12.5		12.00 x 11.00 m
13.0		12.00 x 11.00 m
13.5		12.00 x 11.00 m
14.0		12.00 x 11.00 m
14.5		12.00 x 11.00 m
15.0		12.00 x 11.00 m
15.5		12.00 x 11.00 m
16.0		12.00 x 11.00 m
16.5		12.00 x 11.00 m
17.0		12.00 x 11.00 m
17.5		12.00 x 11.00 m
18.0		12.00 x 11.00 m
18.5		12.00 x 11.00 m
19.0		12.00 x 11.00 m
19.5		12.00 x 11.00 m
20.0		12.00 x 11.00 m
20.5		12.00 x 11.00 m
21.0		12.00 x 11.00 m
21.5		12.00 x 11.00 m
22.0		12.00 x 11.00 m
22.5		12.00 x 11.00 m
23.0		12.00 x 11.00 m
23.5		12.00 x 11.00 m
24.0		12.00 x 11.00 m
24.5		12.00 x 11.00 m
25.0		12.00 x 11.00 m



# People Counting Solution For Public Transport

FootfallCam 3D Plus™ for public transport system is a low power, autonomous device based on stereoscopic vision technology. The people counter is specifically designed for passenger counting above the doorways in buses and trains, and heavily optimised to deal with varying lighting conditions for a guaranteed optimal accuracy.

**What's included:**

 <p>FootfallCam 3D Plus™</p>	 <p>FootfallCam Analytic Manager v.8™</p>
---	--

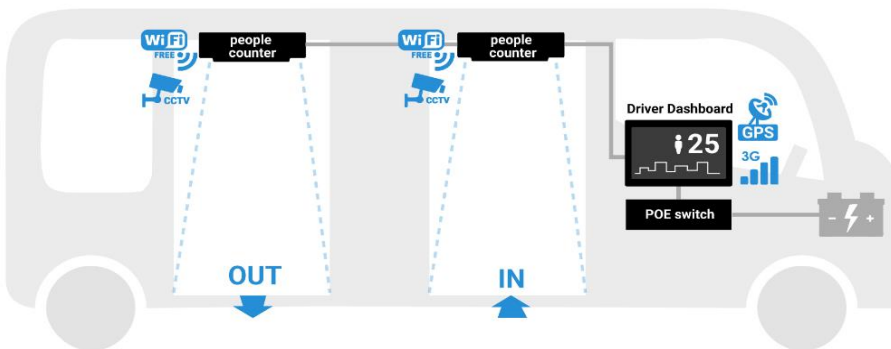
Requirements	
Consumption	8V – 40V
Ideal Mounting Height	Above 2.1m
Width coverage	40cm – 130cm

Specifications	
Casing	Aluminum oxide alloy
Field upgradable	Auto software upgrade
Output	5MP Omni vision 5647 camera module
Frame rate	15 fps
Storage	Micro SD, 8GB memory

**Key features:**

1. **Count the number of passengers**  
Counting the number of passengers that enter and leave the vehicle. (Measures usage of public transport to justify the request of funds and grants)
2. **Validate the passenger counts with ticket counts**  
Verify the number of passenger that utilise the public transport against the collected ticket count
3. **WiFi hotspot**  
Able to works as an internet router that provide smooth high-speed internet to connect to as free wi-fi hotspot for all passengers
4. **Identify passenger load and occupancy**  
Determine the load on a vehicle in real time to prioritise the safety of passengers

**How does it work?**



One FootfallCam 3D Plus™ will be installed in every entrances of the vehicle to count number of passengers entering and leaving. Each FootfallCam will be connected to the in-vehicle PoE switch via a Cat5 network cable for power and internet access. With internet connectivity, users will be able to view occupancy and usage reports of the vehicle remotely from within their home or headquarters.

**Support and maintenance**

Installation support	Accuracy audit	Remote system diagnostic
Remote installation support to you and your contractors to ensure in real time	Manual audit conducted by FootfallCam personnel to verify the accuracy	Remotely troubleshoot issues through online support portal

## FootfallCam Midspan FC- FPS01

FootfallCam Power over Ethernet Midspans offer an easy, fast, and cost-efficient solution for powering network products over ethernet without the need of installing power outlets and electrical cabling. FootfallCam Midspans are connected to the power source transmitting the power and injecting it into the network cable to enable FootfallCam People Counter to receive data and over the same ethernet cable. The Midspan makes it easier to install network video products such as the FootfallCam 3D+ in areas where power cabling and outlets are unavailable. With the usage of the FootfallCam Midspan, the installation of the FootfallCam People Counter 3D+ only requires 1 cable to function.

### Features and Function

#### Function

Data and power are fed to a network video product through an Ethernet cable

#### Installation

- Plug and play installation
- Automatically detects PoE and high PoE enabled devices and supplies inline power
- Local LED management display to indicate power transference

#### Casing

FC-FPS01: Indoor polycarbonate. IP66-/NEMA 4x-Rated

#### Compatibility

Compatible with FootfallCam 3D+™  
All FootfallCam 3D+™ comes with built in PoE support that is fully capable to support both singular PoE Injector and PoE Switches



### Specification

<b>Model Number</b>	FC- FPS01	
<b>Connector</b>	RJ – 45 x2 (Data In/Data and Power Out)	
<b>Dimensions</b>	L X W X H	88 x 51 x 166 mm
	Weight	350g
<b>Ethernet Data Rate</b>	10/100/1000 Mbps (varies based on Ethernet device attached)	
<b>Power</b>	Input	AC 90 to 260 V, AC Socket
	Output	30 W DC at 54V
<b>Power Cord</b>	US/UK/EU/AU Plug type	
<b>Ethernet Cable</b>	TIA/EIA – 568	
	Category 5/5e/6 Cable	
<b>Power Pin Define</b>	Power Pin in Mode B (Pin 45+/78-)	
<b>LED Indicator Light</b>	Power Enable	
	PoE Power Feeding	
<b>Temperature</b>	Usage	0 to 40 Degree C, 5~90% RH
	Storage	-10 to 70 Degree C, 5~90% RH
<b>Emission</b>	FCC Class B, CE Mark	
<b>Standard Compliance</b>	IEEE 802.3 Ethernet	
	IEEE 802.3u Fast Ethernet	
	IEEE 802.3ab Gigabit Ethernet	
	IEEE 802.3af Power over Ethernet	
	IEEE 802.3at Power over Ethernet	
<b>Certification</b>	EC Declaration of Conformity FCC Declaration of Conformity	

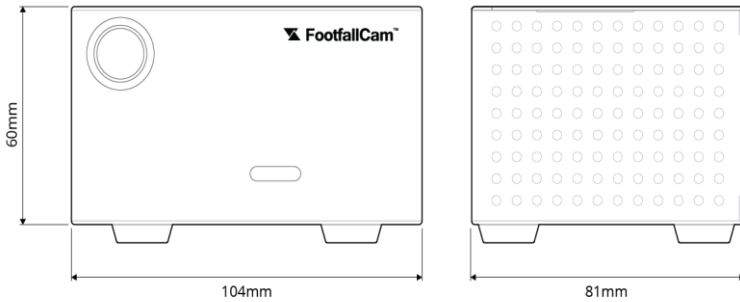
## FootfallCam Centroid™ FC-FCT01

FootfallCam Centroid™ processes up to eight HD full-motion video streams in real-time and can be deployed as a low-power edge intelligent video analytics platform for Network Video Recorders (NVR), smart cameras, and IoT gateways. Applications include human detection, pose estimation and car detection.



### Key Features

- Easy to install, integrate and maintain
- Real time processing data
- Rust Resistance
- Process up to eight HD full-motion video streams
- Low-power edge intelligent video analytics
- FootfallCam Centroid works in conjunction with FootfallCam people counter
- Data Metrics involved in the FootfallCam people counter can be computed by FootfallCam Centroid
- 1-year warranty from the first allocation date



### General Specification

Model	Centroid
Weight	270 gm
Casing Colour	Black
Casing Material	Metal
Total Dimensions (mm)	104 (W) x 81 (D) x 60 (H)
Warranty	1 year from first allocation date*

\* Warranty extension available upon request

### Processor Specification

CPU	64-bit Quad-core @ 1.43GHz
GPU	128-core @ 921MHz
Memory	4GB 64-bit LPDDR4 @ 1600MHz   25.6 GB/s
Video Encoder	4Kp30   (4x) 1080p30   (2x) 1080p60
Video Decoder	4Kp60   (2x) 4Kp30   (8x) 1080p30   (4x) 1080p60
Power	10W

### Interfaces Specification

USB	4x USB 3.0 A (Host)   USB 2.0 Micro B (Device)
Display	HDMI   DisplayPort
Networking	Gigabit Ethernet (RJ45)
Wireless	M.2 Key-E with PCIe x1
Storage	MicroSD card (16GB UHS-1 recommended minimum)
Other I/O	(3x) I2C   (2x) SPI   UART   I2S   GPIOs
Power Supply	5V4A DC Power Adapter

## How it Works?

### 1. Multi Stream Video Analytics

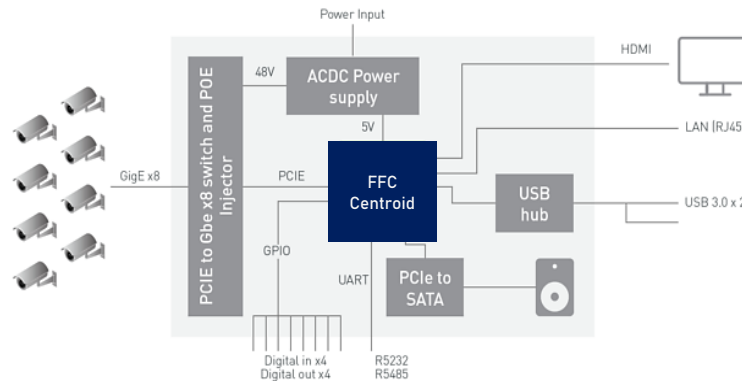


Figure 1: An example NVR architecture using Centroid for ingesting and processing up to 8 digital streams over Gigabit Ethernet with deep learning analytics.

### 2. Object Detection (Localization)



Figure 2: Screenshots from video of Centroid performing object detection on eight 1080p30 streams running at a throughput of 500 megapixels per second (MP/s).



## LabelNest LN21™

LabelNest LN21™, is a 2.1-inch electronic display device that can be placed on the shelf and replaced the traditional paper price label. The E-paper display technology boasts a high contrast ratio, makes superior viewing angle at nearly 180°. Each device is connected to the FootfallCam 3D Max2™ base station through wireless network. The changes or configuration of the price on the product can be adjusted via LabelNest Analytic Manager software and transmitted to the base station and to the label. The latest content can then be updated on the screen in real time basis with a more efficient way.

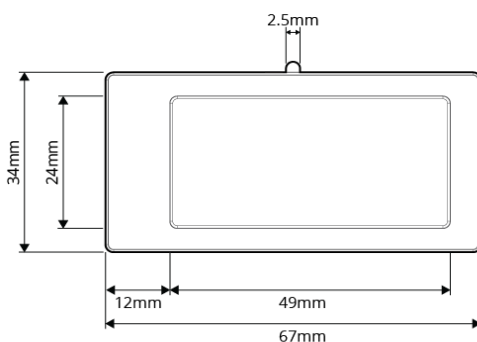
### Key Features

- Advanced battery saving chipset only available in Texas Instrument; Low power consumption
- Fully graphic and available in up to three colours
- Wireless 2-way communication between your system and the labels
- Multi-language enabled, able to show complex information
- Customizable layout and content
- LED Flashing for Geolocation
- Supported by multiple fitting options – Table top with adapter, Rails, Rail Remover Kit.
- Easy to install, integrate and maintain

General Specification	
Model	ESL LN21
Screen Size	2.1 inch (diagonal)
Weight	30g (Approx.)
Appearance	White casing (By default)
Chipset	Texas Instrument CC1310
Material	ABS (Acrylonitrile butadiene styrene)
Total dimensions (mm)	67 x 34 x 13
Operational	
Operating Temperature	0-50°C
Battery Life Time	3- 5 years (Subjective to usage)
Battery	2 x CR2450 (Replaceable batteries)
Power	7W
Display	
Display area (mm)	49 x 24
Display colour	Black & white, Red & white, Yellow & white
Display mode	Dot Matrix Display
Resolution (Pixel)	212 (H) x 104 (W)
Pixel Pitch (mm)	0.229 x 104
Reflect Contrast	7:1
Whiteness Reflect	33%
Viewing angle	175°
Time of refresh (s)	16
Power Consumption of refresh (mA)	8
Language	Multi-Language available
Bar code/ QR code on screen	Yes



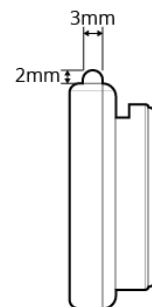
Front View



Top View



Side View



## FootfallCam Mini Computer™ FC- MC01

FootfallCam Mini Computer offer an easy, fast and economical solution suitable for any customer to display the live occupancy dashboard. FootfallCam Mini Computer receives the live data from the FootfallCam People Counter to be translated into the dashboard. The Mini Computer can be connected with any display monitor with HDMI and is portable and lightweight.

### Function

- Act as a medium processor to display live occupancy dashboard
- SafeOccupancy™ app with live dashboard display
- Automated update when customers enter and exit
- Less than 1 second delay when updating the data
- Real-time display of occupancy tracking



### Compatibility

Compatible with any display monitor that support with HDMI connection

### Key Specifications

Device Dimension	Device dimensions (WxDxH): 15cm x 12cm x 7cm Packing dimensions (WxDxH): 16cm x 13cm x 8cm
Weight	Device weight: 0.31kg; Package weight: 0.35kg
Casing	Aluminium oxide alloy, Water and dust resistant
Power	AC Input : 100-240Vac DC Output : +5.1V DC
Communication Mode	WIFI; 2.4ghz and 5ghz
Ports	HDMI 2.0a x 1 port (HDCP 2.2)
Environmental Specs	Operating environment: Temperature 10°C to 45°C, Humidity 10% - 90% Storage environment: Temperature -40°C to 80°C, Humidity 10% - 95%
Thermal Conductivity	235W/mK
Video Output	Up to 1080p @ 25fps
Processor	1GB, 1.2 GHz
Cabling	Cat5, Cat6
Firmware Feature	Multicore processor
IP Rating	IP 31
Origin	Made in the UK
Operating System	Linux



## FootfallCam Seat Sensor™ FC- FAC25

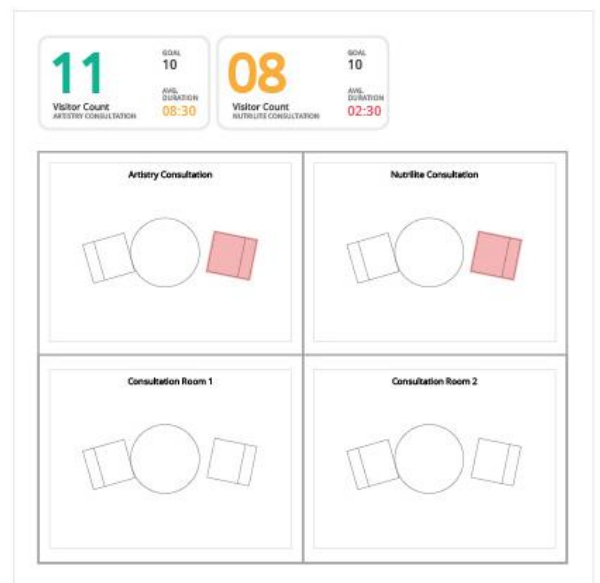
FootfallCam Seat Sensor is a passive infrared sensor (PIR) that calculates seat usage and occupancy. The sensor will be installed under the desk and will detect any movement under the desk to determine if the desk is occupied.

### Key Features

- Easy to install, integrate and maintain.
- Real time processing data.
- Water and Dust Resistance.
- Track the live occupancy and availability of the seats in different environments such as office and bus.
- Advanced battery saving design, lower power consumption.
- FootfallCam Seat Sensor works in conjunction with FootfallCam people counter.
- Sensed data is transmitted to FootfallCam Analytic Manager Software to compute live dashboard and Management Report.
- 1-year manufacturer's warranty.

### How it Works?

Seat sensors use passive infrared (PIR) technology to detect the **movement and body heat** which is an accurate detection of a person's presence in a particular spot, such as office seats and bus seats. The sensors are usually mounted under desks or above the bus seat, for easy fixing and removal. Once it is installed, the Seat Sensor will send the collected data (occupancy logs) to FootfallCam Analytics Manager via FootfallCam People Counter as the transmitter. Multiple sensors are used with own algorithm to detect to avoid false positive.

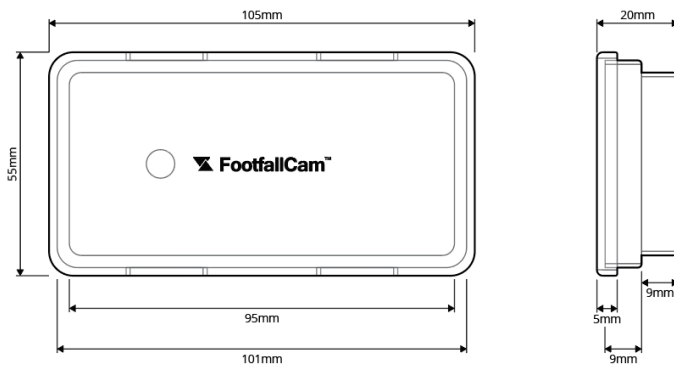


General Specification	
Model	FC- FAC25
Device Dimension	Device dimensions (WxDxH): 105mm x 55mm x 20mm Packing dimensions (WxDxH): 110mm x 70mm x 40mm
Weight	150 gm
Casing Colour	Black
Casing Material	ABS
Sensor Type	Infrared (IR)
Detection Range	Up to 2m
Chipset	Arm Cortex – M3 Processor
Warranty	1-year manufacturer's warranty
Origin	Made in the UK

\* Warranty extension available upon request

Operational	
Operating Temperature	0 to 50 °C
Application	Applicable for both indoor and outdoor
Battery Life Time	Up to 5 years *
Battery	2 x CR2450 (Replaceable)
Power Consumption	0.1W
Transmission Type (between seat sensor and receiver)	RF
Transmission Range	50m radius
Radio Frequency	915-920Mhz
Transmit Power	12dbm

\* Battery life dependent on the frequency of updates





**FootfallCam SBS 138™<sub>FC-FAC24</sub>**

FootfallCam SBS 138™, is an electronic device which is mounted to the lid of bins to measure the filled level inside the bins. Each device is connected to the FootfallCam people counter receivers through wireless network. The data received is transmitted to the FootfallCam Analytic Manager software for bin level computation. The analytic results are displayed on a dashboard allowing users to monitor bin remotely. The receiver can communicate up to 500 bins within 100 metres unobstructed radius.

Key Features

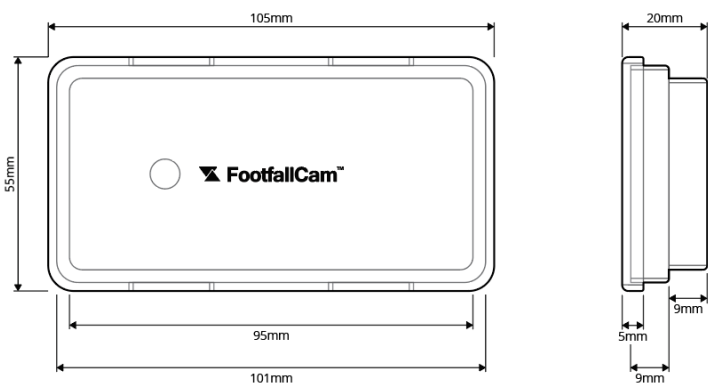
- Easy to install, integrate and maintain.
- Real time processing data.
- Water and Dust Resistance.
- Measures all materials except liquids.
- Advanced battery saving chipset, lower power consumption.
- The Smart Bin Sensor work in conjunction with FootfallCam people counter.
- Sensed data is transmitted to FootfallCam Analytic Manager Software to compute live dashboard and Management Report
- 1-year warranty from the first allocation date

General Specification	
Model	SBS 138
Weight	150 gm
Casing Colour	Black
Casing Material	ABS
Sensor Type	Infrared (IR)
Chipset	Texas Instrument CC1310
Total Dimensions (mm)	103 x 55 x 22
Warranty	1 year from first allocation date*

\* Warranty extension available upon request

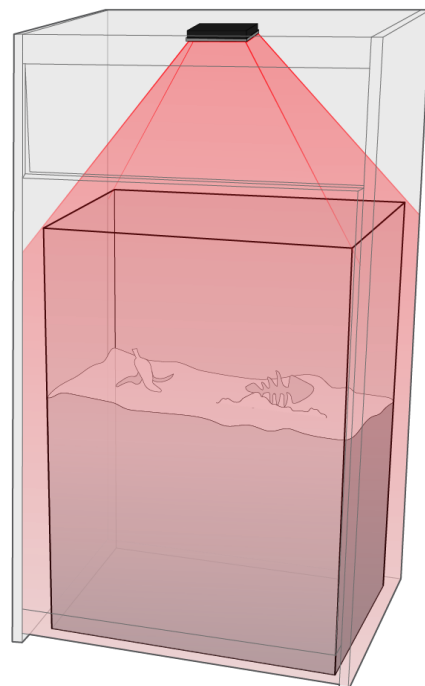
Operational	
Operating Temperature	-20 to 50 °C
Application	Applicable for both indoor and outdoor
Battery Life Time	Up to 5 years *
Battery	2 x CR2450 (Replaceable)
Power	7W
Detection Range	10 – 200 cm
IR Frequency	433 / 868 / 915 MHz

\* Battery life dependent on the frequency of updates



**How it Works?**

Bin sensors use Time-of-Flight (ToF) principle to detect the fill-level of each waste container. FootfallCam SBS 138™ works by illuminating IR and observe the reflected light bounced off the obstructed objects. It is integrated with an analogue-to-digital convertor (ADC) and a programmable timing generator (TG) to generate data and converting them into desirable bin-filled level data. The level of the bin filled is computed by the time difference between the IR emission from the bin sensor and the returned IR received at the sensor detector.





### FootfallCam Staff Exclusion Tag

FC-SE01

The FootfallCam Staff Exclusion Tag comes with a unique pattern which is only recognizable to FootfallCam 3D Plus2 and 3D Max counters. Using the latest in image processing technology, the counter will exclude any person wearing the tag from being counted.

To promote privacy and security, the counter anonymizes the staff exclusion tag's identification so that it is not traceable.

Key Specifications	
Compatible with	FootfallCam 3D Plus2™ and FootfallCam 3D Max™
Weight	0.03 kg
Material	Epoxy
Resistances	Water proof and fire proof
Size (WxLxH)	70 x 100 x 3 mm

#### How does it work?



**Step 1:** User will wear the staff exclusion tag before walking through the tracking zone



**Step 2:** The user will automatically be detected as a staff.



**Step 3:** The user can proceed to walk through the entrance and they will be excluded from being counted.

#### How to use?



## Hardware & Environmental Requirements

- FootfallCam People Counter **MUST** be version 3.3.0 and above in order to process HD video.
- Staff Exclusion tag **MUST** be FootfallCam design of stripe pattern.
- Live view must have enough walking space (**> 2m from centre of live view, equivalent to > 4m coverage in the walking direction**) for staff to be detected.
- Ceiling Height
  - **NOT** supported for 2.6m and below.
  - Recommended ceiling height for 2.6m ~ 3.2m.
  - Investigation require for 3.2m ~ 3.6m.
  - **NOT** supported for 3.6m and above.

## Guidelines to Wear Staff Tag

- Wear tag in the **centre of upper chest area** for the best accuracy.
- Wear tag upright, and not dangling downwards.
- Wear tag in landscape orientation as shown in <https://prntscr.com/szu8qx>.
- Do **NOT** wear tag with a lanyard or hide tag in pocket or cover tag with other objects such as tudung, scarf, hair, hand.
- Simple and plain coloured shirt works better than colourful shirt with complex patterns/stripes.
- Walk at normal speed, otherwise motion blur might affect accuracy.



**FootfallCam Staff Exclusion Wireless Button**

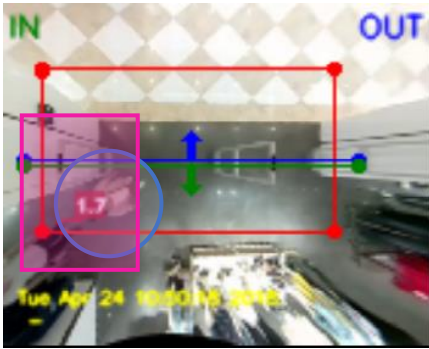
FC-SE01

The FootfallCam Staff Exclusion Wireless Button will allow users to exclude the counting of staff in their footfall data. This function is an additional peripheral attached to the FootfallCam internal chipset and will be accompanied by a remote button.

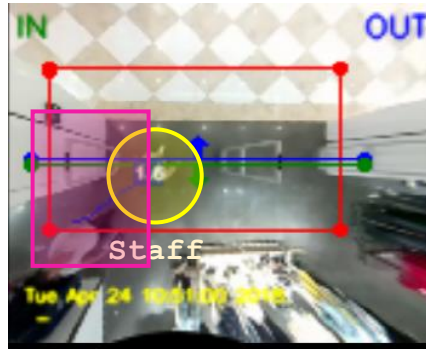
**Key Specifications**

Compatible with	FootfallCam 3D Plus™
Weight	0.12 kg
Material	Plexiglass
Resistances	Water proof and fire proof
Power output	DC12 V
Sensor	Inductive proximity sensor
Size (WxLxH)	86mmx13mmx86mm
Included	Remote button

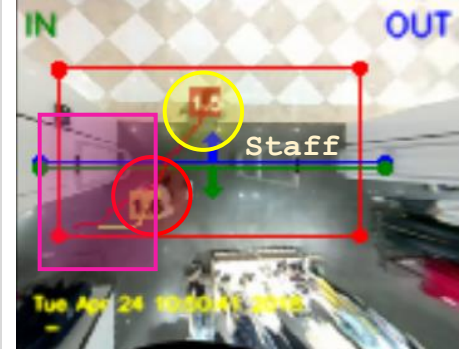
**How does it work?**



**Step 1:** Staff will press the staff exclusion remote button within the exclusion zone.

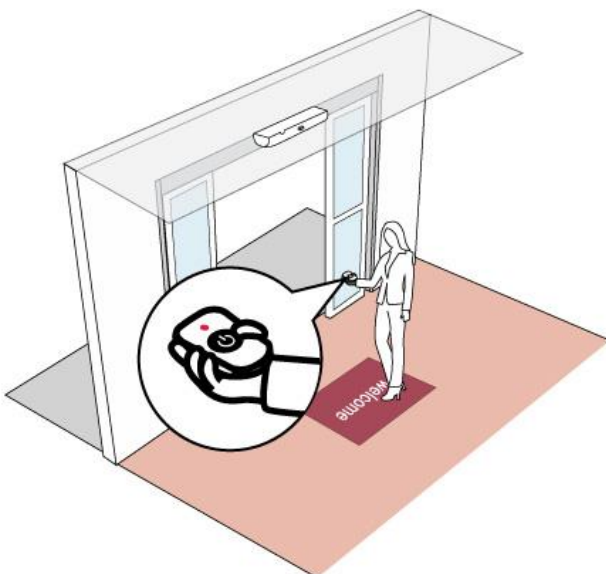


**Step 2:** The staff will automatically be detected as a staff.



**Step 3:** The staff can proceed to walking through the entrance as normal.

**How to install?**



The staff exclusion button must be pressed by a staff member when they enter and exit the store to automatically void the counting of employees. The remote staff exclusion button will send a signal to the FootfallCam 3D Plus™ to void the count.

Each employee is recommended to have their own unique staff exclusion remote button.

**FootfallCam PoE Switch** FC- FPS02/03/04/05



FootfallCam PoE Switch provides multiple adaptive RJ45 ports that are used for connecting multiple people counters in a singular location with support on MDI and MDIX auto flipping and wire-speed forwarding. All ports have a PoE function that support IEEE 802.3af / at standard and can be used as an ethernet powered device to automatically detect and provide power to any power receiving devices that meets the standard through a network cable. The FootfallCam PoE Switch is simple and easy to use, with no configuration, and is a plug and play device.

**Features and Function**

- Built in power supply
- Supports 10/100 Base-T applications
- Compact design is ideal for WLAN access
- Plug and play without configuration
- Electrical Safety: Low power devices only receive the power they need
- IEEE 802.3at up to 30W POE port
- Ethernet Terminals
- Internal Power Supply



**Specification**

			
<b>Model Number</b>		<b>FC- FPS02</b>	<b>FC- FPS03</b>
<b>Number of Ports</b>		4	8
<b>Dimensions</b>	L X W X H	185*124*44mm	250*150*44mm
	Weight	800g	1500g
<b>Protocol Standard</b>		CSMA / CD IEEE 802.3, 802.3i, 802.3u, 802.3af, 802.3at, 802.3x	
<b>PoE Spec</b>		PoE over current protection PoE circuit sorting protection Power Pin Assignment: 1/2 (+), 3/6 (-)	
<b>Transmission Media</b>		10 BaseT Cat 3,4,5 UTP/STP 100 BaseTx Cat 5 UTP/STP	
<b>System Mode</b>		Standby	
<b>LED Indicator Light (Per Port)</b>		PoE In Use (Orange) 10/100 Link/Act (Green) Green: Power	
<b>Network Interface</b>		4 x 10/100Mbps RJ-45 PoE 1~4 Ports 2 x 10/100Mbps RJ-45 Uplink 2 Ports	8 x 10/100Mbps RJ-45 PoE 1~8 Ports
<b>PoE Power Supply</b>	<b>PoE Standard</b>	IEEE802.3af / at	
	<b>Port Power</b>	Maximum 30 W	
	<b>Total Power</b>	Maximum 65 W	Maximum 150 W
	<b>PoE Power</b>	Maximum 63W	Maximum 145W
	<b>Priority</b>	Standby	
<b>Performance</b>	<b>Store and Forward</b>	Standby	
	<b>Exchange</b>	1.2 Gbp/s	2.0 Gbp/s
	<b>Mac Address Depth</b>	2k	
<b>Power Supply</b>	<b>Consumption</b>	Maximum 65 W	Maximum 150 W
	<b>Input</b>	100 – 240 AC, 50/60 Hz, 2A Internal Power Supply	
<b>Temperature</b>	<b>Usage</b>	0 °C ~ 40 °C; Operating humidity: 10% ~ 90% RH non-condensing	
	<b>Storage</b>	-40 °C ~ 70 °C; Storage humidity: 5% ~ 90% RH non-condensing	

## FootfallCam PoE Switch FC- FPS02/03/04/05



FootfallCam PoE Switch provides multiple adaptive RJ45 ports that are used for connecting multiple people counters in a singular location with support on MDI and MDIX auto flipping and wire-speed forwarding. All ports have a PoE function that support IEEE 802.3af / at standard and can be used as an ethernet powered device to automatically detect and provide power to any power receiving devices that meets the standard through a network cable. The FootfallCam PoE Switch is simple and easy to use, with no configuration, and is a plug and play device.

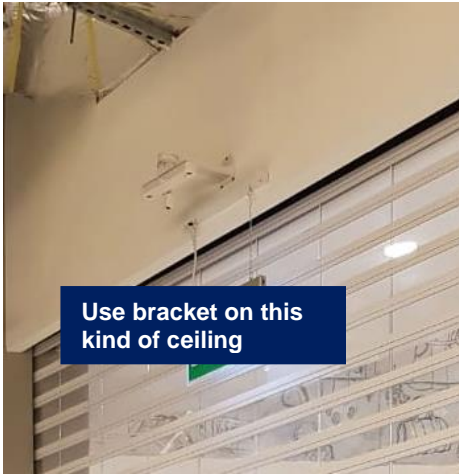
### Features and Function

- Built in power supply
- Supports 10/100 Base-T applications
- Compact design is ideal for WLAN access
- Plug and play without configuration
- Electrical Safety: Low power devices only receive the power they need
- IEEE 802.3at up to 30W POE port
- Ethernet Terminals
- Internal Power Supply



### Specification

			
<b>Model Number</b>		<b>FC- FPS04</b>	<b>FC – FAC06</b>
<b>Number of Ports</b>		16	24
<b>Dimensions</b>	L X W X H	295*165*44mm	440*220*44mm
	Weight	2000g	4000g
<b>Protocol</b>		CSMA / CD	
<b>Standard</b>		IEEE 802.3, 802.3i, 802.3u, 802.3af, 802.3at, 802.3x	
<b>PoE Spec</b>		PoE over current protection	
		PoE circuit sorting protection	
		Power Pin Assignment: 1/2 (+), 3/6 (-)	
<b>Transmission Media</b>		10 BaseT Cat 3,4,5 UTP/STP	
		100 BaseTx Cat 5 UTP/STP	
		1000Base-SX/LX Cat5 UTP/STP	
<b>System Mode</b>		Standby	
<b>LED Indicator Light (Per Port)</b>		PoE In Use (Orange)	
		10/100 Link/Act (Green)	
		Green: Power	
<b>Network Interface</b>		16 x 10/100Mbps RJ-45 PoE 1~16 Ports	24 x 10/100Mbps RJ-45 PoE 1~24 Ports
		2 x Gigabit TP +1 SFP Uplink	2 Gigabit TP/SFP Combo Uplink
<b>PoE Power Supply</b>	PoE Standard	IEEE802.3af / at	
	Port Power	Maximum 30 W	
	Total Power	Maximum 160 W	Maximum 370 W
	PoE Power	Maximum 155 W	Maximum 350 W
	Priority	Standby	
<b>Performance</b>	Store and Forward	Standby	
	Exchange	7.2 Gbp/s	8.8 Gbp/s
	Mac Address Depth	2k	
<b>Power Supply</b>	Consumption	Maximum 160 W	Maximum 370 W
	Input	100 – 240 AC, 50/60 Hz, 2A Internal Power Supply	
<b>Temperature</b>	Usage	0 °C ~ 40 °C; Operating humidity: 10% ~ 90% RH non-condensing	
	Storage	-40 °C ~ 70 °C; Storage humidity: 5% ~ 90% RH non-condensing	

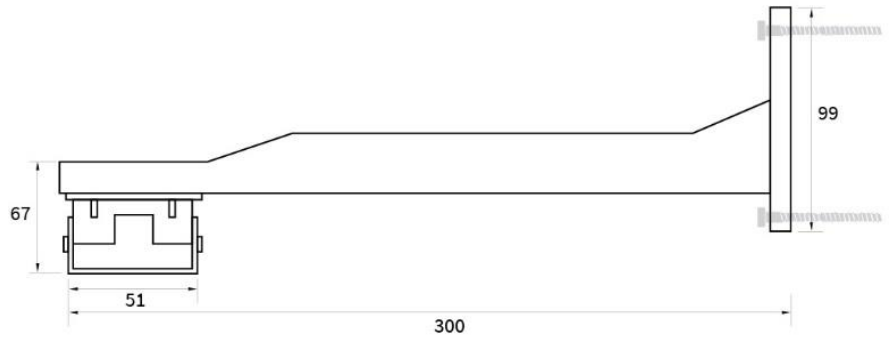


Use bracket on this kind of ceiling

**FootfallCam Wall Bracket Kit** FC – FAC01

In some environments, counters may not be able to mount on the ceiling, or the ceiling height is outside the recommended range (2.5 m – 4.5 m). In those cases, a wall mount bracket would be recommended.

Dimensions



**Without Counter Installed**



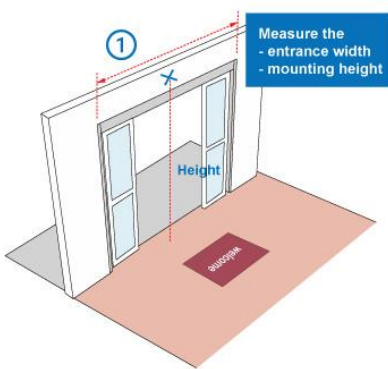
**With Counter Installed**



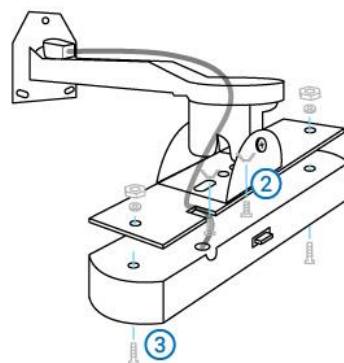
**Key Specifications**

Compatible with	FootfallCam 3D Plus
Dimension	(WxDxH): 300 x 100 x 85mm
Maximum Load	2kg
Weight	200 g
Material	Metal
Color	White
Environment	Indoor
Ideal Mounting height	2.8 m -3.5 m (measure from floor)
Included	2x ceiling screws, 2x wall plugs, 2x bolts, 2x nuts, 2x washers

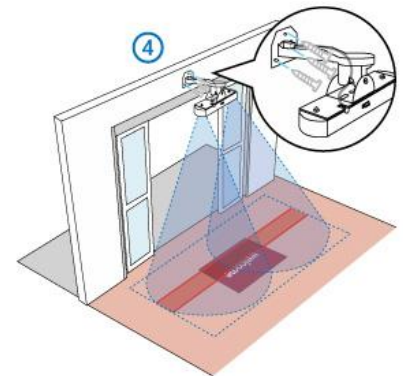
**How to Install Wall Bracket**



**Step 1:** Determine the mounting location (ideal height: 2.8m – 3.5m), calculate the total counter required using [FootfallCam Calculator](#)



**Step 2:** Attach the counter to the bracket with 2x screws, nuts and washers.



**Step 3:** Mount the bracket on the wall with 2x screws and wall plugs.



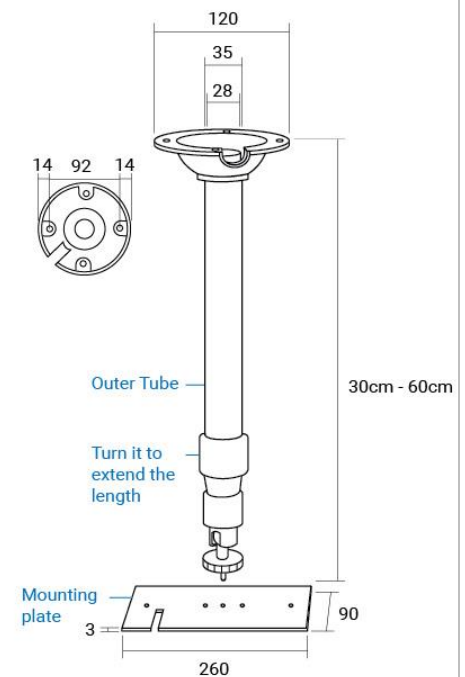
## FootfallCam Drop Pole 0.6m

FC – FAC14

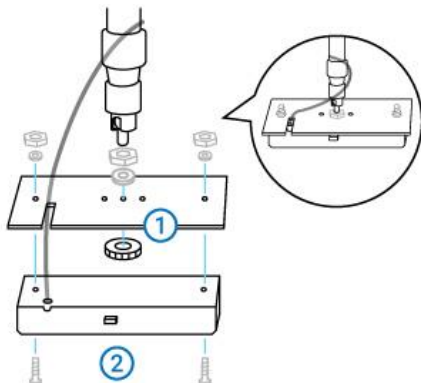
The FootfallCam Drop Pole allows installation of a FootfallCam device when the ceiling height of the store is outside of the recommended range, and wall bracket is not suitable.

### Dimensions

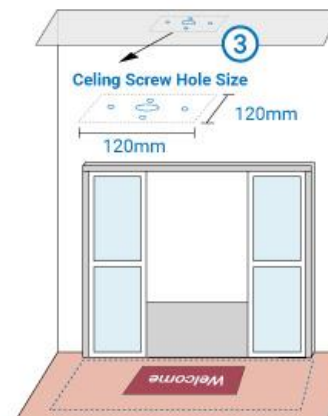
Key Specifications	
Compatible with	FootfallCam 3D Plus
Maximum Load	2kg
Weight	0.18 kg
Material	Aluminum
Extension Reach	0.3m to 0.6m
Environment	Indoor
Ideal Mounting height	2.8m to 5.1m (measure from floor)
Included	FootfallCam Mounting Plate Screwing Kits



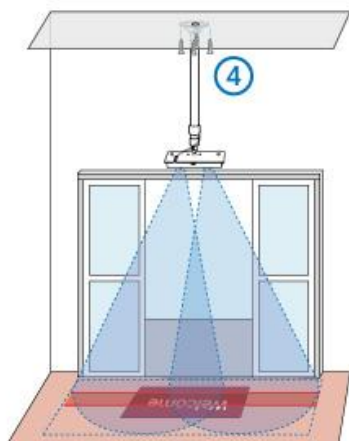
### How to Install Drop Pole



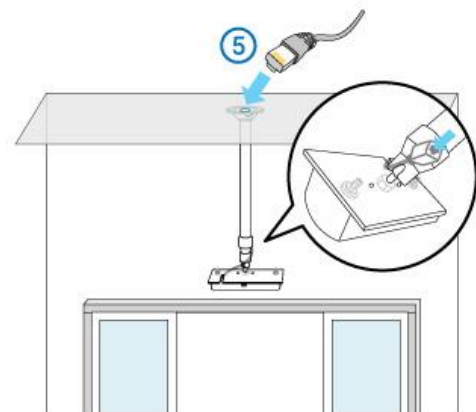
**Step 1:** Attach the mounting plate to the drop pole using the internal screws, then attach the counter to the mounting plate using the external screws.



**Step 2:** Determine the mounting location and drill (5) holes for installing the drop pole. The holes should be drilled within (120mm x 120mm)



**Step 3:** Mount the drop pole onto the ceiling.



**Step 4:** Connect the Cat5 cable through the tubes of the drop pole.



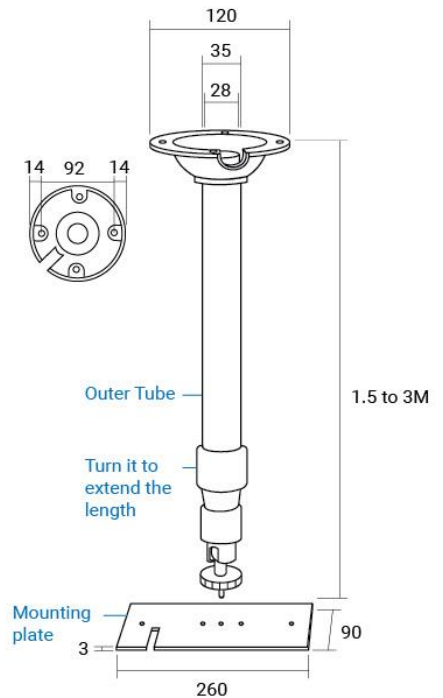
### FootfallCam Drop Pole 3m

FC – FAC02

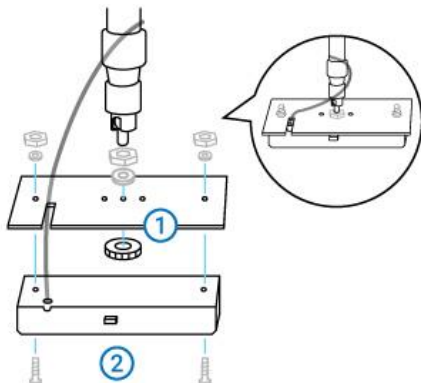
The FootfallCam Drop Pole allows installation of a FootfallCam device when the ceiling height of the store is outside of the recommended range, and wall bracket is not suitable.

Dimensions

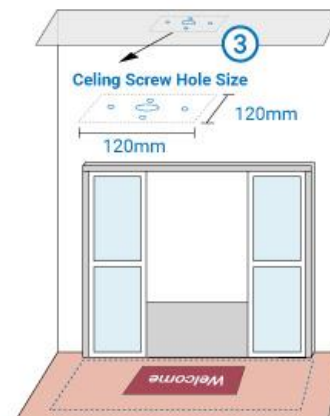
Key Specifications	
Compatible with	FootfallCam 3D Plus
Maximum Load	2kg
Weight	0.35 kg
Material	Aluminum
Extension Reach	1.5m to 3m
Environment	Indoor
Ideal Mounting height	4.5m to 7.5m (measure from floor)
Included	FootfallCam Mounting Plate Screwing Kits



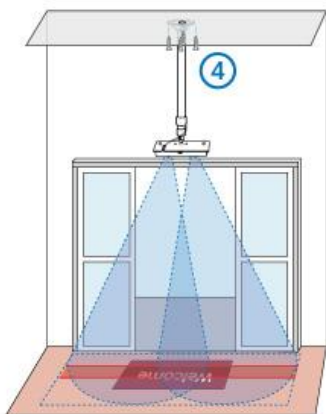
### How to Install Drop Pole



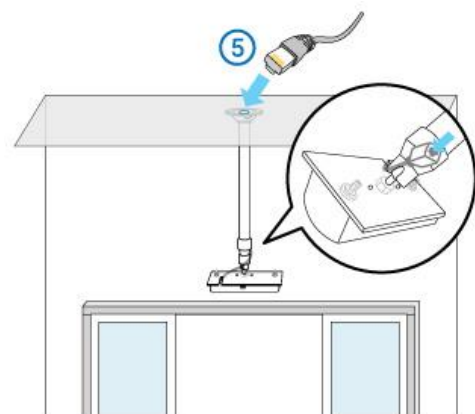
**Step 1:** Attach the mounting plate to the drop pole using the internal screws, then attach the counter to the mounting plate using the external screws.



**Step 2:** Determine the mounting location and drill (5) holes for installing the drop pole. The holes should be drilled within (120mm x 120mm)



**Step 3:** Mount the drop pole onto the ceiling.

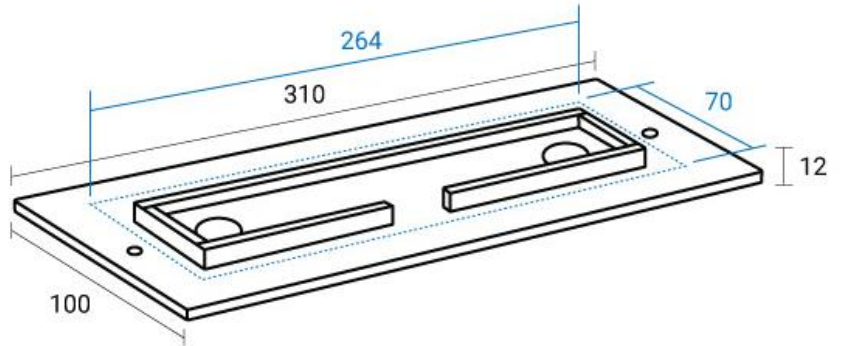


**Step 4:** Connect the Cat5 cable through the tubes of the drop pole.

**FootfallCam Flush Mounting Plate Kit** FC-FMP04

The FootfallCam Flush Mounting Plate designed to provide a better outlook and fit for the store design.

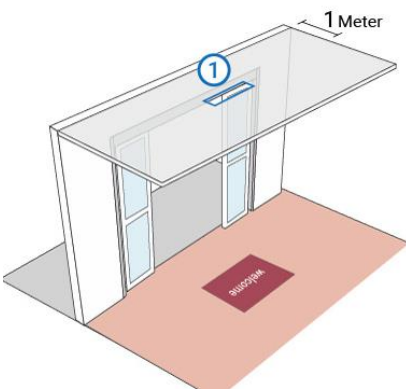
Dimensions



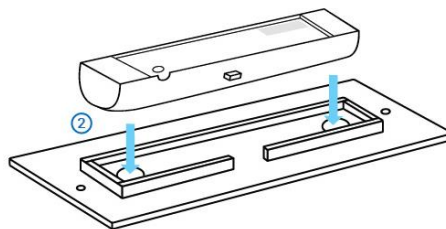
**Key Specifications**

Compatible with	FootfallCam 3D Plus
Dimension	(WxDxH): 310 x 100 x 12mm
Ceiling Hole Size	(WxD) 264 x 70 mm
Maximum Load	1kg
Weight	500 g
Thickness	3.0 mm
Material	Acrylic
Color	White transparent
Environment	Indoor
Ideal Mounting height	2.8 m -3.5 m (measure from floor)
Included	2x ceiling screws, 2x wall plugs

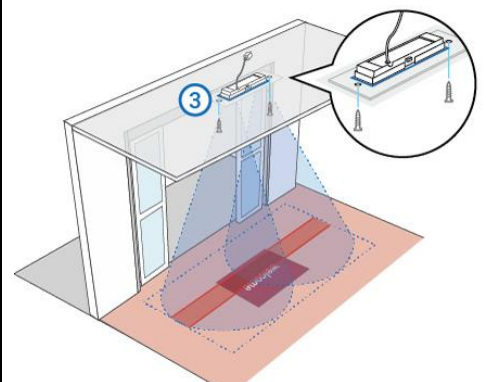
**How to Install Flush Mounting Plate**



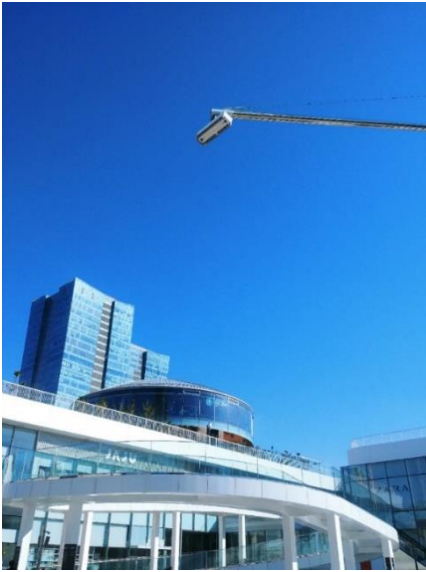
**Step 1:** Determine the mounting location (ideal height: 2.8m – 3.5m), cut the hole of camera space for installing the mounting plate (264mm x 70 mm)



**Step 2:** Attach the counter to the bracket.



**Step 3:** Mount the plate with camera on the wall with 2x screws and wall plugs.



## FootfallCam Outdoor Casing

FC – OC04

The FootfallCam Outdoor Casing provides protection to the FootfallCam device from external factors, allows installation of the FootfallCam device at outdoor areas.

### Dimensions

Key Specifications	
Compatible with	FootfallCam 3D Plus
Maximum Load	2kg
Weight	0.314 kg
External Size	241 x 101 x 60mm
Base Plate	281 mm
Material	ABS Material + PC Cover
Protection Level	IP67
Environment	Outdoor
Color	Light Grey
Included	Screwing Kits



FootfallCam Outdoor Casing: Side View



FootfallCam Outdoor Casing: Top View

# FootfallCam Analytic Manager V8<sup>™</sup>



## Key Features

- Easy to Set Up
- Available on web, tablet and mobile
- Counter and Branch Details Configuration
- Pre-defined 15+ Reports and 60+ KPIs
- Health Check Monitoring
- Import Sales Data for comparison with Footfall
- Data Export or Integrate with 50+ Business System
- Account Management
- Email Scheduler
- Regular Backup
- Support Multi Language

Minimum Server Requirements	
Operating System	Window Server 2012 R2 and above
Windows Browser	Google Chrome (Current Version)
Storage	500GB to 2TB support up to 2000 Devices
Processor	3.1 GHz (64-bit Processor) with Multi-Core
Physical Memory	16 GB
Web Server	Internet Information System (IIS) 7.0 and above
Microsoft .NET Framework Version	4.0
Database	MS SQL Server 2012 and above

Software Specifications	
Interface	Http; Https
Compatible Browser	IE7 or Later Mozilla Firefox or Later Chrome Version 4.0 or Later Safari
User Levels	2 levels: Administrator, Standard User
Ethernet	10/100 Mb Ethernet
Time	NTP, Adjustable time zone, automatic day light saving adjustments
Data Delivery	TCP/IP
Database Type	SQLite
Report format	csv, .xml, .txt
Data Storage	5 Years storage with auto sync
Data Backup	Yes
Backup Frequency	Daily Full Backup for Data and Configuration File Weekly Backup to Sub Server for Contingency Purpose
Software Version Upgrade	Auto Upgrade

## FootfallCam Analytic Manager V8™ FC-FAMV801

### Centralised Management Analytics Software

FootfallCam Analytic Manager V8™ is enterprise web-based control panel designed for customers who are managing large number of counters. It collects data from all counters and store them in a single place where user can carry out deep analytics. Analytic Manager V8™ provide the full analysis of traffic data for individual stores and across multiple store locations, region and the entire chain including:

- Visitor entering and exit at the entrance,**
- Sales conversion,**
- Queue counting,**
- Heatmap reporting,**
- Live occupancy,**
- Shopping mall traffic flow** and
- Other Wi-Fi metrics like **passerby, visit duration, returning customer** and etc.

### Pre-Defined Report Set

15+ pre-defined reporting set designed for different functional role e.g. Top management at headquarter, Marketing Manager, Operation Manager, Regional Manager or Store Manager. There are Company level report set which could provide the overall insight of the store performance in macro view, and store level report set which provide the further insight of the footfall pattern and shopper behavior in deep for any operational and marketing decision.

### Health Check Report

A routine system health check is implemented, which check across the whole system to make sure all counters are connected and counting. This health check is usually scheduled to perform daily at a pre-defined time (e.g. 12am). An automated email alert will be sent to the person-in-charge detailing any faults found, making this a pro-active yet manageable approach to maintain all the counters across your retail chain

### User Account Management

Different users may have different job responsibilities and need to use the data in different ways. Individual user accounts can be setup for your team member, and access rights assigned accordingly. An **unlimited number of user accounts** may be created, and every user will be assigned a user ID and password, which they will be able to access from any networked location. System administrator will have remote access to the accounts information, modify access rights and disable any account when a team member leaves the company

### Automate Email Scheduler

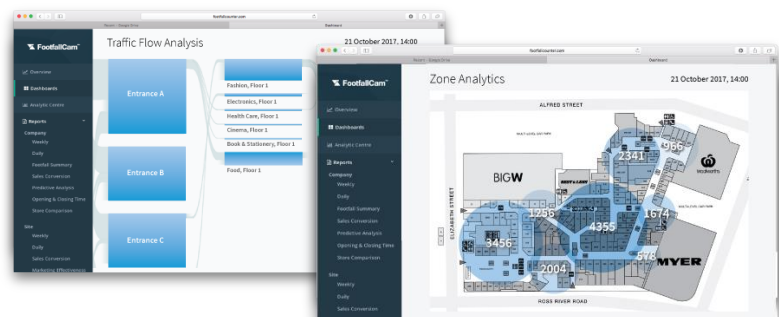
Reports can be scheduled to be sent to the key person (e.g. store manager for the store weekly reports, marketing manager for the campaign effectiveness reports, etc.) via email on a regular basis

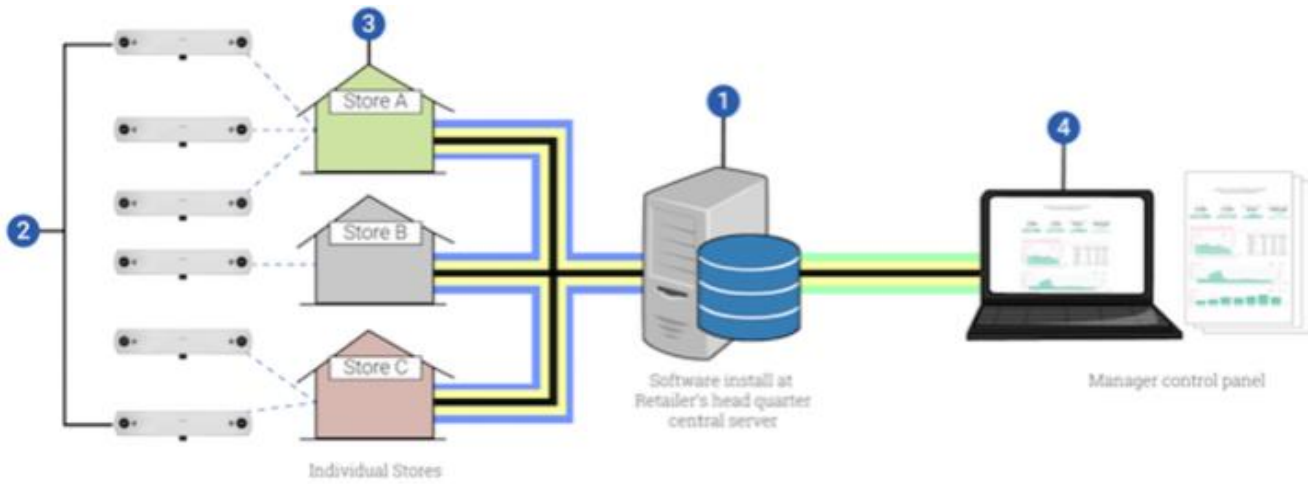
### API Available for Data Integration

API are available to import or export data to and from a system. FootfallCam is a fully embedded software module, intended for any environment where store footfall counting is required. Business intelligence (BI) system extracts and analyses footfall data (from FootfallCam central server) together with ePoS data (from retailer's ePoS system) to produce management report for corporate strategic planning

### Centrally Managed System

Using a centrally managed server, the user will be able to view the counting data of all the counters registered under their account from one location. The FootfallCam Analytic Manager Cloud hosting option will be able to store an unlimited number of counters, while the number of counters the Corporate Server can store is dependent on the size of the server used. However, all counting data will displayed in one centrally managed system that is accessible remotely from anywhere as long as internet connectivity is available.

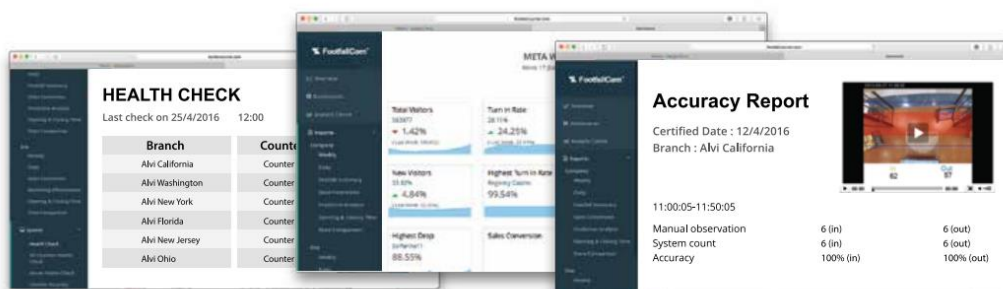




## 2.1 Server Options

FootfallCam Analytic Manager V8™ Server Options:

	FootfallCam Cloud Server	Install at Client's Server
Descriptions	Software and data stored at FootfallCam hosted server. Retailer able to access via web browser with a secured password or login account.	Software and data stored at retailer's own corporate server. Retailer will be given full access to the software which is having the same function as cloud based software.
Pricing	Free	\$300 <b>One off set up fee</b>
Software Core Features		
Max Number of Devices	Unlimited	Support up to 2000 devices with 2TB storage
Analytics and Reports	Yes	Yes
Email Scheduler	Yes	Yes
Compare data by store, by time and by different metrics	Yes	Yes
Custom Dashboard created by user	Yes	Yes
User Account Management	Yes	Yes
Health Check Reports	Yes	Yes
Accuracy Audit Function	Yes	Yes
Sales Data/ POS Integration	Yes	Yes
Data Export in csv, pdf, txt and excel format	Yes	Yes
Counter and Branch Management	Yes	Yes
Multi Language	Yes	Yes
Remote Access to the counter	Yes	Yes, provided the device is within the same network
Firmware Upgrade	Automate	Automate, however customer able to control the quantity upgrade per day
Software upgrade	Automate	Automate
Backup and Security Protection		
Data backup	Automate daily backup in cloud server	Backup function available for retailer to set up your own backup
Configuration setting backup	Automate daily backup in cloud server and client's server	Automate daily backup
Contingency backup	Weekly backup to sub server	Not Available
Data Protection	Yes	Yes



## 2.1.1 Installing in Client's Corporate Server Requirement

Customers will have the option to install FootfallCam's software in their very own server. Software and data will be stored at retailer's own corporate server only. Customer will be given full access to the software which is having the same function as cloud based software with all the latest updates and features. Customers will have more control over the software such as limiting the quantity of firmware upgrade per day. Installing at customer's own server aligns with customer's data protection policy where all data should only be in their restrictive network for security concerns.

### Workflow for Server Installation

- I. For clients without any existing cameras, they will only need to request for the server installation to the account manager and once a request is placed with FootfallCam and payment is made, FootfallCam will schedule a time with client to book in for installation.
- II. Client will install and provide Teamviewer access to FootfallCam team
- III. It takes 2 hours to complete the server installation
- IV. FootfallCam will provide access details to clients via email upon completion of installation

### Workflow for Server Migration

- I. Client can choose to use FootfallCam's cloud server first, then at a later stage, if they prefer to have their own server with FootfallCam's software, they can request from us and we will assist them by migrating all their existing information from our cloud to their server.
- II. FootfallCam's team will perform several procedures to migrate the server. Firstly, we would back up the data of the previous server.
- III. Similar to server installation, we would need to install our FootfallCam software onto client's server which takes about 2 hours to complete
- IV. Once our software has been installed, our technical team will begin transferring all the existing data to the new server and restoring the previous data up to the new server.
- V. Then, we will reconfigure all the existing counters are sending the data to the correct server by connecting to each counter and change its IP address to the updated IP address.

For server requirement and more information, please refer to [FootfallCam Analytic Manager V8 datasheet](#)

## 2.2 Data Import and Export

FootfallCam is a fully embedded software module, intended for any environment where store footfall counting is required. Business intelligence (BI) system extracts and analyses footfall data (from FootfallCam central server) together with ePOS data or staff labour hours (from retailer's ePOS system or staff management system) to produce management report for corporate strategic planning.

There are several methods of [importing sales data/staff labour hours](#):

- FTP sales data to FootfallCam server
- Provide FTP Directory of your store to us
- Manually upload whenever required

There are several methods in [exporting counting data](#):

- FTP via each counter (raw data only)
- Export from server software (aggregated data from branch level in hourly/daily format)

We have an API module available for customers to obtain the data. For more information, please refer to [FootfallCam API Documentation](#)

## Services

## 3.1 Sales Consultation

FootfallCam provides professional sales consultation services to clients by carefully listening to their requirements and what they are looking for. FootfallCam representative will assign an **account manager** to specially dedicated to serve the client to handle the entire project with them. The representative will serve as a single point of contact for the client, to better manage and provide quicker feedback loop between client and FootfallCam. Alternatively, clients may also contact our support centre directly for issues relating to operating system and general enquiries. Support Hours:

### Asia Office

Opening Hours: 9:00 A.M. to 6:00 P.M. Monday – Friday (G.M.T +8)  
 Telephone support line: +60 3-9011 2413  
 Email: [support@footfallcam.com](mailto:support@footfallcam.com)

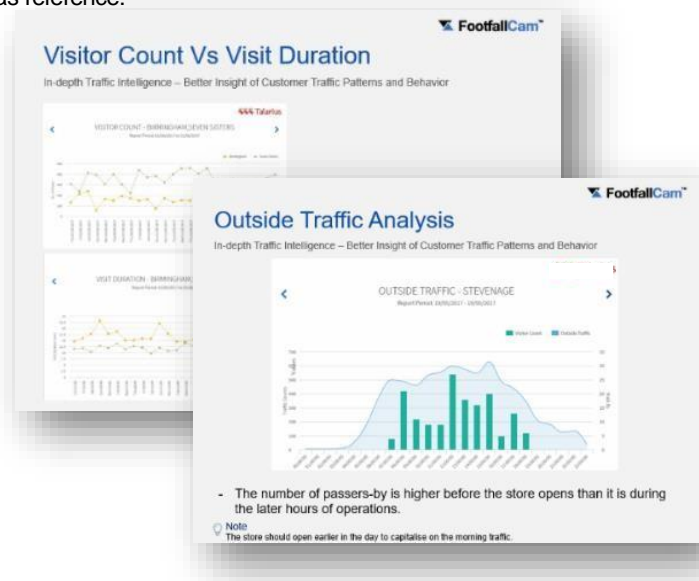
### Europe Office

Opening Hours: 9:00 A.M to 5:00 P.M Monday – Friday (G.M.T)  
 Telephone support line: +44 (0)1344 988681 or +44 (0)1344 988650  
 Email: [support@footfallcam.com](mailto:support@footfallcam.com)

## 3.1.1 Project Tracker

The dedicated account manager will provide an update on the project progress. It aims to provide **visibility** on the project for the client and better manage the project to meet the **timeline**. Clients are also encouraged to provide constructive feedback and convey their requirements in order for FootfallCam team to direct the project in meeting their aims of this project. This project tracker includes several parts that each serves a purpose on its own, here is the breakdown of the basic structure of the project tracker as reference:

- a) Installation Summary to Date
- b) All Existing Devices' Health Check Update
- c) Data Readiness Timeline
- d) Important Reports
- e) Deeper Analytics on Existing Reports
- f) Targeted Timeline
- g) Summary/ Future Plans



## 3.2 Installation Support

FootfallCam 3D Plus is fitted on the entrance for each store. and It would require only one Cat5e cable connect from the counter to the back- office router via PoE injector, which would combine both network and power cable. FootfallCam 3D plus is a standalone computer unit which will carry out video analytics, hence no PC is required in the store.

Clients have the option to use FootfallCam's service for installation or they have the option to use their very own engineer to perform the installation. FootfallCam's installation process is upright straightforward and easy to perform, hence any electrician or handyman will be able to perform the installation as well. For a reasonable store size, an installer would normally take no longer than 2 hours per store to complete the entire installation to get the devices up and running.

Installation Options	Method of Communication	Description	Cost
FootfallCam's Engineer	FootfallCam's Internal Communications	<ol style="list-style-type: none"> <li>1) FootfallCam will arrange own engineer to perform the installation, the installers are very experienced and able to install devices at optimal position within short period of time</li> <li>2) FootfallCam work with our local contractors and partners in delivering the <b>installation service in the local country</b></li> <li>3) FootfallCam's dedicated account manager will <b>project manage</b> the whole installation progress and ensure the delivery of the product</li> </ol> <p>Please fill up this <a href="#">checklist</a> and send it to <a href="mailto:sales@footfallcam.com">sales@footfallcam.com</a> to book in for an installation</p>	Chargeable
Clients' Own Installer	Instant Messaging (WhatsApp)	<ol style="list-style-type: none"> <li>1) FootfallCam will conduct training with installer prior to installation to explain on Do's and Don'ts of the installation process</li> <li>2) Please inform FootfallCam at least <b>24 hours</b> prior to installation and email to <a href="mailto:support@footfallcam.com">support@footfallcam.com</a> to notify FootfallCam to be on standby and support the installation</li> <li>3) When the installer arrives at site, they would need to <b>take picture of the store</b> and send to the WhatsApp for FootfallCam to advise on optimal camera positioning</li> <li>4) Once it is installed, installer would need to access the camera and send over <b>screenshots</b> of the IT settings</li> <li>5) Once the counter is <b>blue</b> and ready to go, FootfallCam will inform the installer that it is good to leave the site and head for the next installation</li> </ol>	Free

## 3.3 Counting Lines Calibration

After every installation of a FootfallCam, it is important that it achieves more than **90% accuracy level**. Every counter can be calibrated by client themselves which is quite simple and easy to do by just referring to our user guide. In some uncommon situations, clients may not know how to calibrate the counters, then they may seek help from our calibration specialist team to perform it for them. FootfallCam has a **specialised team** in calibrating the counting lines of the counter to ensure maximum accuracy is achieved for that counter. Once the counter is calibrated with the counting lines, there would be an accuracy audit process which will generate a report on the accuracy level of each individual counter. Each counter's system count will be manually verified against manual count to verify its accuracy.

If a client wishes to seek service from FootfallCam, they would need to just fill up this [FORM](#) and send it to our email at [support@footfallcam.com](mailto:support@footfallcam.com) and the calibration would take **3 working days** and for the full accuracy auditing will take up to **7-14 days** to collect enough sample size.

During the accuracy auditing, there would be an audit video uploaded to the server (approximately 25mb per video and 3x videos would require for tuning purpose) and it recorded for tuning and reporting purpose, once completed, it would stop sending to the central server after the counter has been verified. If it does not hit the satisfactory accuracy, the user may submit a [re-verification request form](#) and allow FootfallCam verification specialists configure the counting settings.

Please refer to our [user guide](#) Section 4 for more information on this counting line calibration and accuracy audit process.

## 3.4 IT Consultation

FootfallCam offers IT consultation services which we will work with client's IT team to go through their requirements. In the event there are any IT issues, they may consult us as well, since we are the manufacturer or both hardware and software, we well versed with our in-house products and we are able to solve any issues with a shorter turn-around time in comparison with other people counting solution providers.

Below are listed some of the IT consultation service we offer:

- a) Server set up and configurations
- b) Networking configurations
- c) System/software upgrade
- d) Data Integration
- e) Software Configuration
- f) Bugs reporting/feedback

Please contact us via email at [support@footfallcam.com](mailto:support@footfallcam.com) or call us at +44 (0)1344 988650

## 3.5 Support Contracts

This Agreement represents contract between FootfallCam and Client for the provisioning of services required to support the People Counting system. This Agreement remains valid until superseded by an amendment to this Agreement which has been approved by both parties.

There are two plans that client may opt for;

### I. Standard Plan

#### In Standard Plan, we offer reactive support approach

- ✓ Counting Line Calibration and Accuracy Audit
- ✓ Assist the Client to answer technical enquiry and ensure full operational system
- ✓ Counter Reconfiguration
- ✓ Client to provide IT staff to actively monitor the health check status on the counter and identify the issue
- ✓ Each FootfallCam will send heartbeat to the health check report every 15 minutes, and the aggregated Health Check report will be provided by FootfallCam
- ✓ First line, second line and onsite support
- ✓ Reinstalling server software on Client's new server
- ✓ Reporting software and database support maintenance
- ✓ Software/ Firmware upgrades
- ✓ Telephone/ Email assistance

### II. Premium Plan

#### In Premium Plan, we offer proactive support approach

- ✓ Include all of the terms in Standard Plan
- ✓ FootfallCam provide comprehensive cover in all aspect in the system operational standard
- ✓ FootfallCam provide dedicated support staff to work with the Client
- ✓ FootfallCam will proactively manage the health check status and data integrity of the system

Please refer to your account manager to seek advice on which plan would be more suitable for client. If a client wishes to sign up for a plan, it must be subscribed within 3 months of purchase date, otherwise there would be extra charges incurred. Termination of the plan will need to have a month notice and reactivation will incur extra charges.

Kindly contact your respective account manager to draft a support contract for you to sign to subscribe, alternatively you may request it by dropping an email at [sales@footfallcam.com](mailto:sales@footfallcam.com)

## 3.6 Software Training

Every client will be able to request for a software training session with FootfallCam team, this includes;

- a) Navigation of Control Panel and its Configurations
- b) Generating Reports
- c) Comparison of Sites/Branches by Metrics
- d) Creating Own Dashboards
- e) Set up Email Scheduler
- f) Verification (Accuracy Audit) Process
- g) Creating User accounts

Software Training Audience	Method of Training	Description	Cost
Headquarters	Remote	FootfallCam is able to conduct training to client's headquarters' staff remotely via Skype or Google Hangout	Free
	On-Site	There would be a representative from FootfallCam to conduct the training at clients' office	Chargeable
	Video Training	Referring to our website and readily available training materials and perform self- learning	Free
Store-Level	Remote	FootfallCam is able to conduct training to client's stores' staff remotely via Skype or Google Hangout	Free
	On-Site	There would be a representative from FootfallCam to conduct the training at clients' office	Chargeable
	Video Training	Referring to our website and readily available training materials and perform self- learning	Free

Please refer to our pricelist for more information on the price.

**Section 1: Hardware Requirement**

140° Degree Lens (Suitable for Ceiling Height of 2.1m – 2.4m)

100° Degree Lens (Suitable for Ceiling Height of 2.5m – 4.5m)

65° Degree Lens (Suitable for Ceiling Height of 4.6m – 7.0m)

**Add-Ons**

Staff Exclusion Tag **(Per Person)**

Wall-Mounted Staff Exclusion Button **(Per Counter)**

Wireless Staff Exclusion Button **(Per Person)**

Drop Pole **(Optional)**

Wall Bracket **(Optional)**

**Section 2: Software Requirement (Choose One)**

FootfallCam Cloud Server

Private Hosting Server

**Section 3: Installation Requirement (Choose One)**

Self-Installation + Remote Support

Hardware Installation

**Section 4: Support Requirement (Optional)**

Pay as You Go

Standard Support Package (Annual Fee)

Premium Support Package (Annual Fee)

Extended Warranty (Annual Fee)

**Section 5: Additional Services (Optional)**

Accuracy Audit Report

Skype Training (Per 2 Hours)

Custom Reporting Options<sup>2</sup>

**Section 6: Additional Solution (Optional)**

Heatmap Report

SafeOccupancy™: Live Occupancy Counting

Queue Counting

Washroom Management

Electronic Shelf Label

Area Counting

AI CCTV

Wi-Fi Hotspot

**Section 7: Delivery Details**

Standard Delivery (7 to 14 Days, standard charge applied)

Expedited Shipping (Within 7 Days, surcharge will be applied on top of standard charge)

Custom Shipping Account (According to Customer's Preference)

Courier Company Name:

Account Number:

Account Name:

Additional Information:

**Broker Details (Optional)**

Broker Name

Broker Contact Number

Broker Email Address

**Section 8: Delivery Document Details (Optional)**Commercial Invoice Value<sup>3</sup>

<sup>1</sup>If the VAT number is left blank, a standard charge of 20% VAT will be applied.

<sup>2</sup>Pricing is subjected to feasibility of customisation, and scope of work involved.

<sup>3</sup>Please indicate the desired value to be declared to customs, if not selected, by default it will be indicated as 20 USD